

# WWCI Series

## SMD Wire Wound Ceramic Inductor

### Size 0805



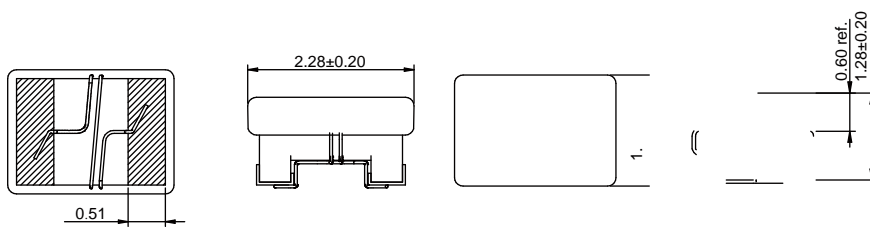
#### CHARACTERISTICS

- Wire wound with high Q and high SRF
- More stable due to ceramic design
- Small size and small tolerance available
- Quantity: 2000pcs

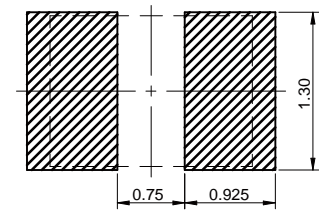
#### APPLICATION

- HF application

#### Dimensions: [mm]



#### Land Pattern: [mm]



#### Electrical Properties:

| Part No       | Inductance (nH) | Test @MHz | Tolerance | Q Min. | Test Q @MHz | Temperature Rise Current Max. (mA) | DCR Max. | SRF Min. (MHz) |
|---------------|-----------------|-----------|-----------|--------|-------------|------------------------------------|----------|----------------|
| WWCI0805-2N7B | 2.7             | 250       | ±0.2 nH   | 35     | 1000        | 800                                | 0.08     | 6000           |
| WWCI0805-3N3B | 3.3             | 250       | ±0.2 nH   | 60     | 1000        | 800                                | 0.08     | 6000           |
| WWCI0805-3N9B | 3.9             | 250       | ±0.2 nH   | 60     | 1000        | 600                                | 0.06     | 6000           |
| WWCI0805-4N7B | 4.7             | 250       | ±0.2 nH   | 60     | 1000        | 600                                | 0.06     | 5800           |
| WWCI0805-5N6J | 5.6             | 250       | ±5%       | 40     | 1000        | 600                                | 0.1      | 5500           |
| WWCI0805-6N8J | 6.8             | 250       | ±5%       | 50     | 1000        | 600                                | 0.11     | 5500           |
| WWCI0805-8N2J | 8.2             | 250       | ±5%       | 60     | 1000        | 600                                | 0.06     | 5500           |
| WWCI0805-10NJ | 10              | 250       | ±5%       | 60     | 500         | 600                                | 0.08     | 4800           |
| WWCI0805-12NJ | 12              | 250       | ±5%       | 45     | 500         | 600                                | 0.15     | 4000           |
| WWCI0805-15NJ | 15              | 250       | ±5%       | 50     | 500         | 600                                | 0.17     | 3400           |
| WWCI0805-18NJ | 18              | 250       | ±5%       | 50     | 500         | 500                                | 0.2      | 3300           |
| WWCI0805-22NJ | 22              | 250       | ±5%       | 60     | 500         | 600                                | 0.1      | 3300           |
| WWCI0805-27NJ | 27              | 250       | ±5%       | 60     | 500         | 600                                | 0.12     | 2600           |
| WWCI0805-33NJ | 33              | 250       | ±5%       | 60     | 500         | 500                                | 0.15     | 2400           |
| WWCI0805-39NJ | 39              | 250       | ±5%       | 50     | 500         | 500                                | 0.29     | 2000           |
| WWCI0805-47NJ | 47              | 200       | ±5%       | 60     | 500         | 500                                | 0.15     | 1700           |

## Typical Electrical Characteristics:

Inductance VS. Frequency Characteristics:

INDUCTANCE(mH)