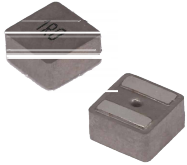


Wire Wound Molded SMD Power Inductors Size 1060

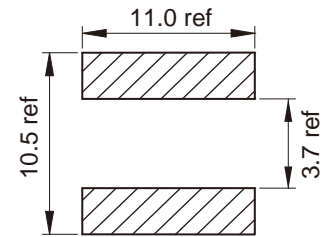
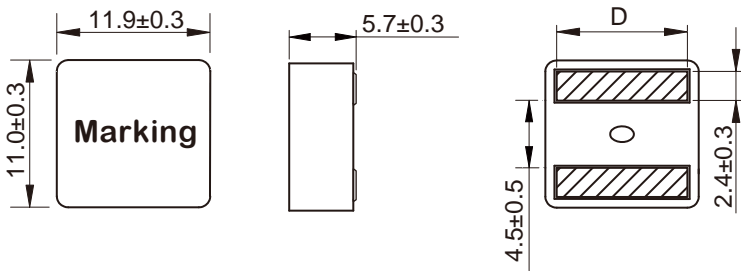


-
-
-
-
-
-
-
-
-
-

C

Dimensions: [mm]

Land Pattern: [mm]

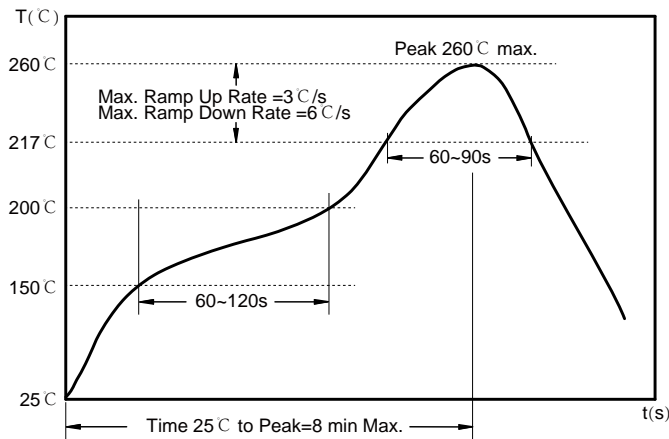


Electrical Properties:

Saturation Current will cause L to drop approximately 30%

Temperature Rise Current: The actual value of DC current when the temperature rise is $\Delta T=40^{\circ}\text{C}$

Soldering Reflow:



Preheat condition: 150 ~200 C / 60~120 sec.

Allowed time above 217 C: 60~90 sec.

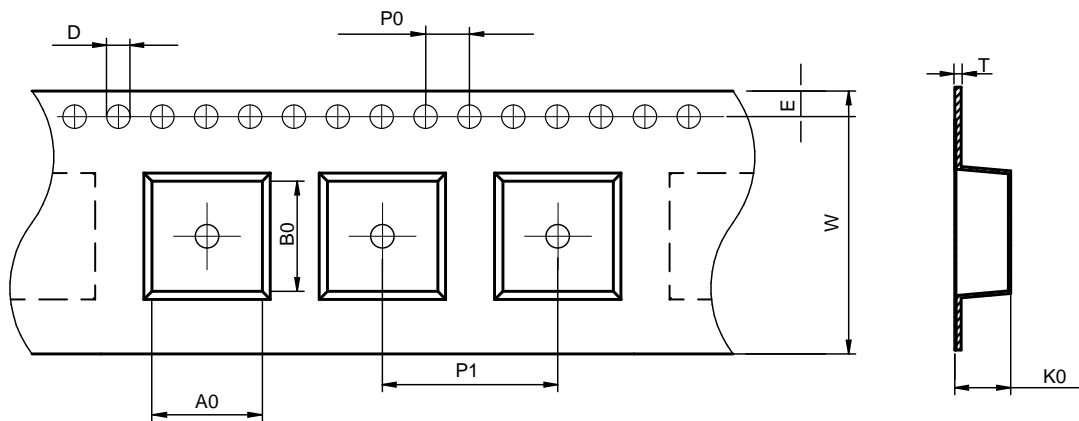
Max temperature: 260 C.

Max time at max temperature: 10 sec.

Allowed Reflow time: 2x max.

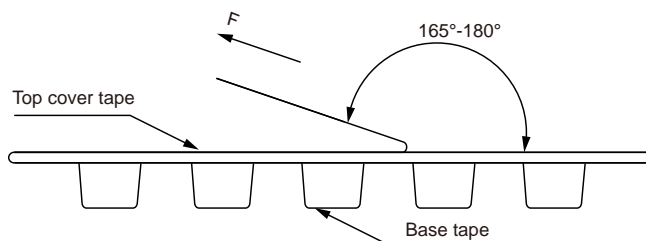
Packaging Information:

Tape Dimension:



Series	A0 (mm)	B0 (mm)	D (mm)	P0 (mm)	P1 (mm)	W (mm)	K0 (mm)	E (mm)	T (mm)
MDTE1060	12.4± 0.1	11.5± 0.1	1.5± 0.1	4.0± 0.1	16.0± 0.1	24.0± 0.3	6.3± 0.1	1.75± 0.1	0.35± 0.05

Peel force of top cover tape:



The peel force of top cover tape shall be between 0.1 to 1.3 N

Product Marking:

Marking	Printing Inductance)
---------	----------------------

Reel Dimension: [mm]The storage period is within 12 months after the completion of production. Be s
tions (temperature: -5 to 35°C, humidity: 75% RH Max).If the storage period elapses, th
terminal electrodes may deteriorate.

Product should not be exposed to environment with high temperature, high humidity, du
etc.

Products should be handled with care to avoid damage or contamination from perspirat

Please always handle products carefully to prevent any damage caused by dropping d
removing.

Packaging Quantity: