

MDTA Series

Flat Wire Molded Inductor

Size 1580



FEATURES

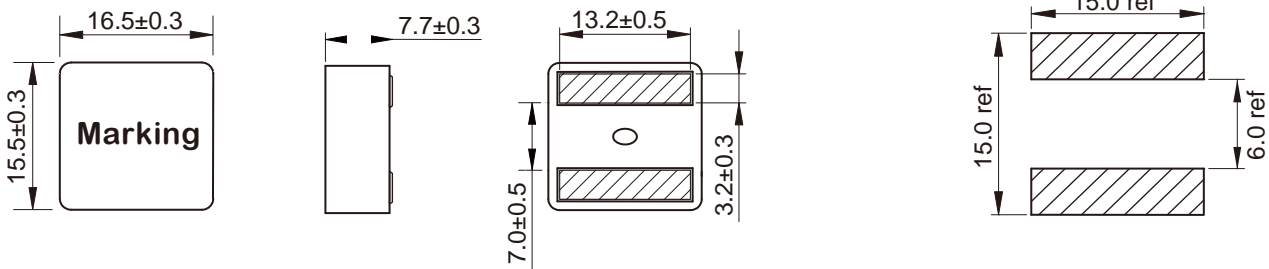
- Flat wire coil for low copper losses
- High current capacity
- AE
-
-

APPLICATION

- Noise suppression for motor
-

Dimensions: [mm]

Land Pattern: [mm]

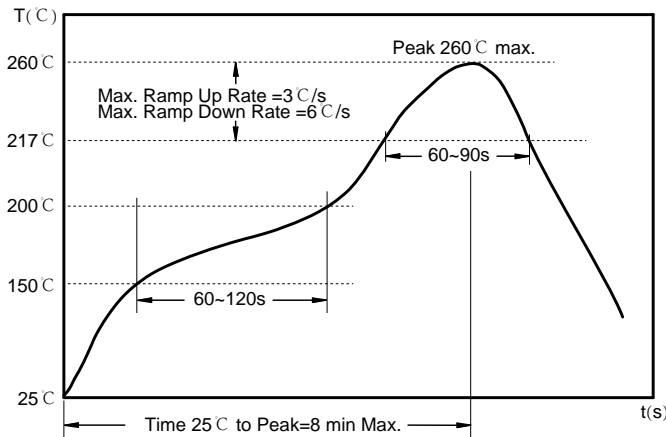


Electrical Properties:

| Part No | L@100KHz /0.1V | Tolerance | I _{SAT} Typ. | I _R | | R _{DC} Max. |
|---------|----------------|-----------|-----------------------|----------------|-----------|----------------------|
| | | | | 20°C rise | 40°C rise | |
| | 2.00 | ±20% | | | | |
| | 2.20 | ±20% | | | | |
| | | ±20% | | | | |
| | | ±20% | | | | |
| | | ±20% | | | | |
| | | ±20% | | | | |
| | | ±20% | | | | |
| | | ±20% | | | | |
| | | ±20% | | | | |
| | 22.0 | ±20% | | | | |

Saturation Current will cause L to drop approximately 30%
 Temperature Rise Current that causes the specified temperature rise from 25°C ambient.

Soldering Reflow:



Preheat condition: 150 ~200°C / 60~120 sec.

Allowed time above 217°C : 60~90 sec.

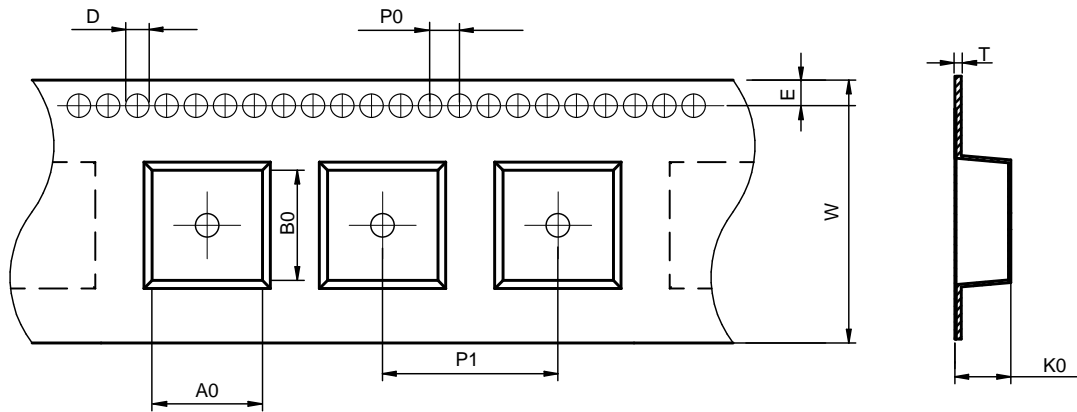
Max temperature: 260°C .

Max time at max temperature: 10 sec.

Allowed Reflow time: 2x max.

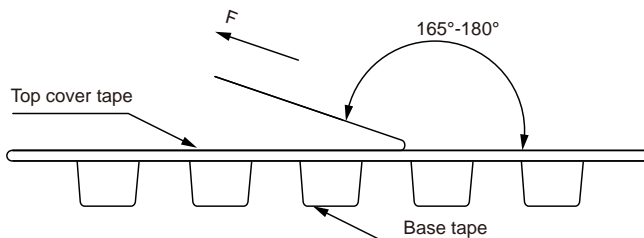
Packaging Information:

Tape Dimension :



| Series | A0 (mm) | B0 (mm) | D (mm) | P0 (mm) | P1 (mm) | W (mm) | K0 (mm) | E (mm) | T (mm) |
|----------|----------|----------|---------|---------|----------|----------|---------|----------|-----------|
| MDTA1580 | 17.0±0.1 | 16.0±0.1 | 1.5±0.1 | 4.0±0.1 | 24.0±0.1 | 32.0±0.3 | 8.5±0.1 | 1.75±0.1 | 0.50±0.05 |

Peel force of top cover tape:



The peel force of top cover tape shall be between 0.1 to 1.3 N

Product Marking:

| | |
|---------|-----------------------|
| Marking | Printing (Inductance) |
|---------|-----------------------|

Reel Dimension: [mm]



Packaging Quantity: