

ACMA ETH Series

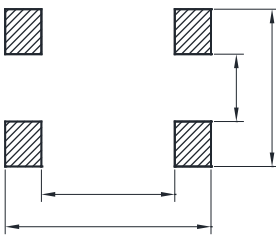
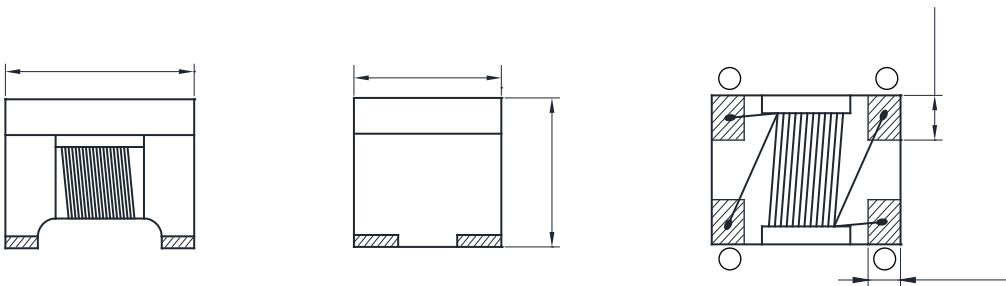


FEATURES

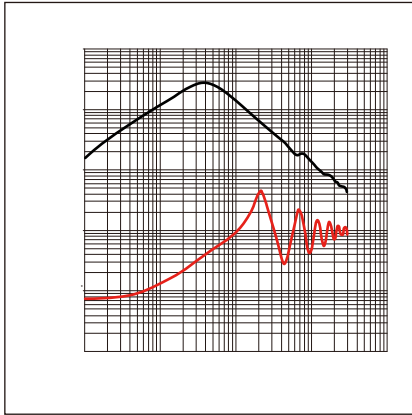
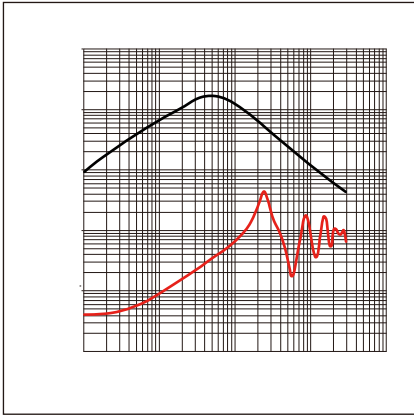
- Common mode filters for automotive Ethernet 10BASE-T1S.
- This product achieves high S-parameter while using a proprietary method.
- AEC-Q200 qualified.
- Operating temperature : -40 to +125°C
- Quantity: 2000pcs

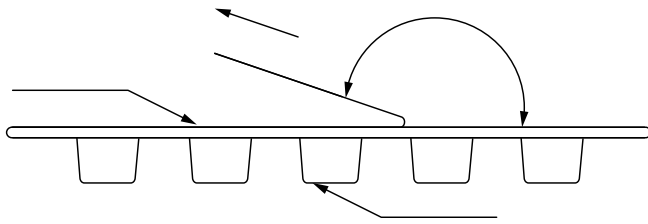
APPLICATION

- CAN-FD.
- Ethernet system.



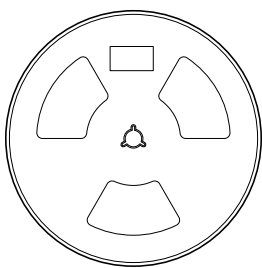
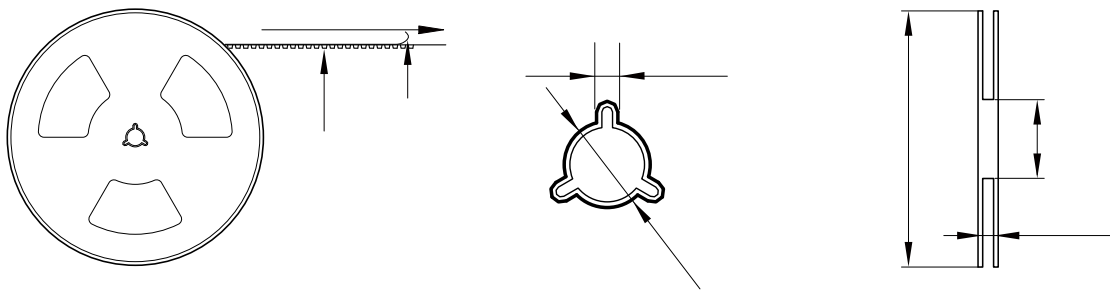
Part No	Inductance @100KHz/0.1V (μH)	Tolerance	Rated Current Max. (mA)	DC Resistance Max. (Ω)	Rated Voltage Max. (V)	IR Min. (MΩ)
ACMA3225ETH-131Y	130	+30/-10%	115	3.5	80	10
ACMA3225ETH-241Y	240	+50/-20%	70	4.1	80	10



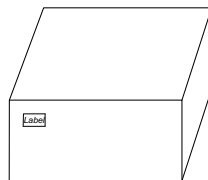


The peel force of top cover tape shall be between 0.14 to 0.78 N

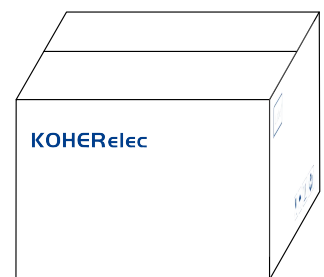
:



2000 Pcs/Reel



5 Reel /Inner box(10K Pcs)



8 Inner box/Carton box(80K Pcs)

:

•

•

•

•

•

•

•

•

•

•

•

•

•