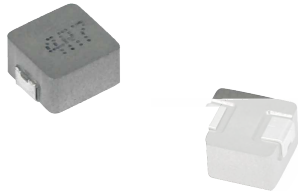


MDE Series

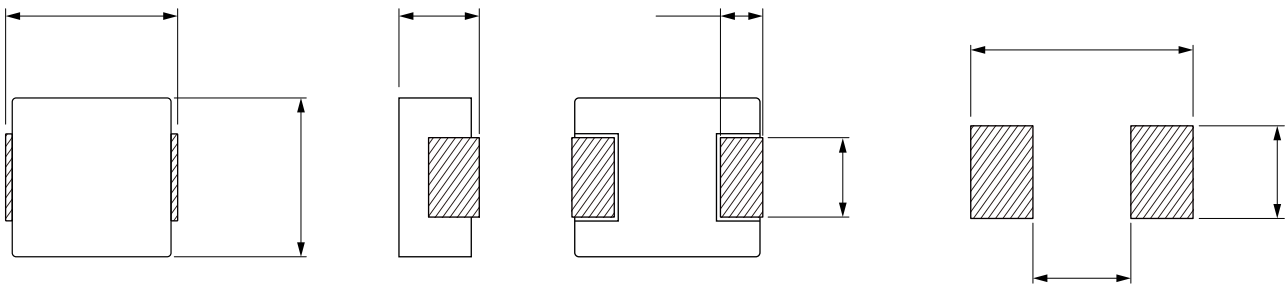


FEATURES

-
-
-
- Ultra low buzz noise due to molding construction
-
- Operating temperature range - 55 °C to + 125 °C
- Quantity: 800pcs

APPLICATION

-
-
- Base stations
-
- Battery powered devices
-



Part No	Inductance @ 100kHz/1V	Tolerance	DC Resistance Max.	Current Max. (A)	Temperature Rise Current Max. (A)
MDE0840-R22M			1.80		
MDE0840-R33M					
MDE0840-R47M	0.47				
MDE0840-R56M					
MDE0840-R68M					21.0
MDE0840-R82M				19.0	19.0
MDE0840-1R0M	1.00			17.0	17.0
MDE0840-1R5M	1.50		7.60	15.0	15.0
MDE0840-1R8M	1.80		11.0	13.5	12.5
MDE0840-2R2M			11.4	12.0	12.0
MDE0840-3R3M			15.0	11.0	10.0
MDE0840-4R7M	4.70			10.5	
MDE0840-5R6M				10.0	
MDE0840-6R8M					7.00
MDE0840-8R2M				7.70	
MDE0840-100M	10.0			7.00	

Part No	Inductance @ 100kHz/1V	Tolerance	DC Resistance Max.	Current Max. (A)	Temperature Rise Current Max. (A)
MDE0840-150M	15.0		71.0		
MDE0840-220M			113		
MDE0840-330M			156		
MDE0840-470M	47.0				

△