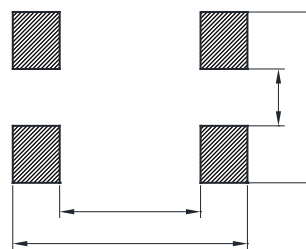
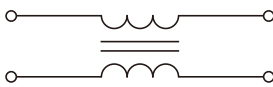
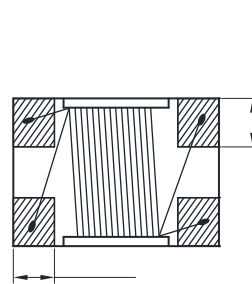
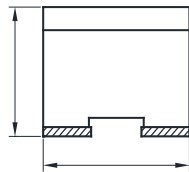
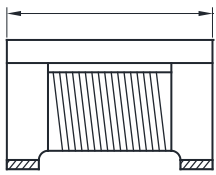
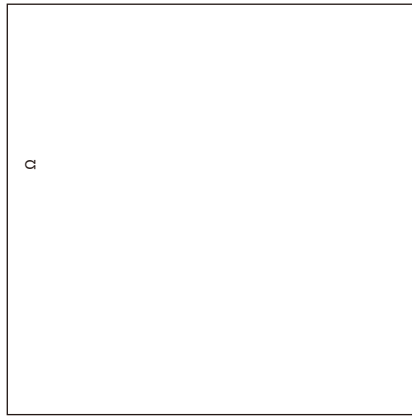
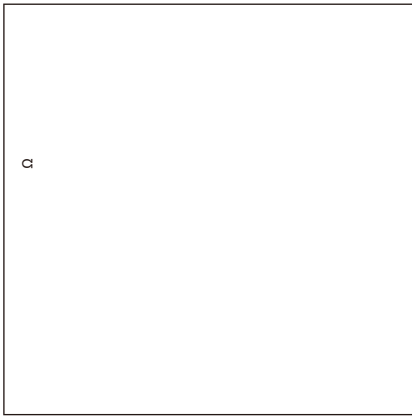
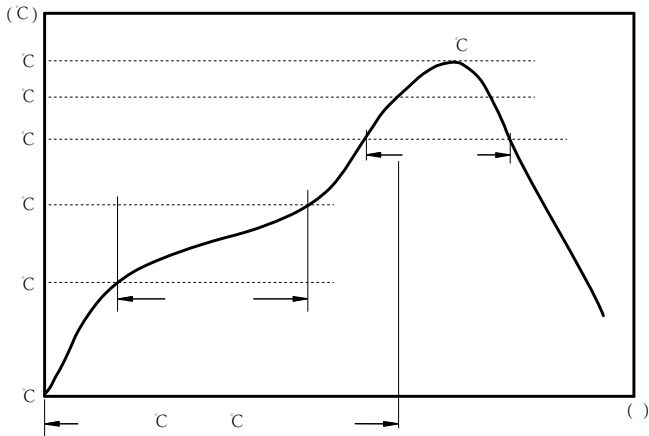


- Impedance variation: Extensive lineup are available for compatibility with various usages
- Common mode filters for Signal Line
- Operating temperature range: -40 to +125°C
- AEC-Q200 qualified
- Quantity: 500pcs
  
- Radiated noise suppression for car multimedia interfaces (MOST, USB2.0, IDB-1394, etc.)



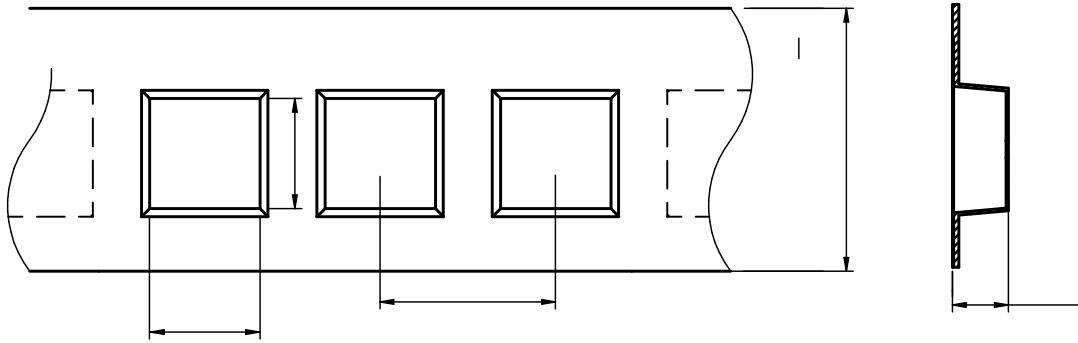
Part No	Z @ 100 MHz Min. ( )	Z @ 100 MHz Typ. ( )	I <sub>R</sub> Max. (mA)	R <sub>DC</sub> Max. ( )	V <sub>DC</sub> Max. (Volts)	IR Min. ( )
BCMA4532-900N	68	90	4000	0.050	50	10M
BCMA4532-231N	173	230	3500	0.050	50	10M
BCMA4532-601N	450	600	2500	0.060	50	10M
BCMA4532-901N	650	900	2300	0.070	50	10M
BCMA4532-142N	1000	1400	2000	0.100	50	10M
BCMA4532-282N	2100	2800	900	0.350	50	10M



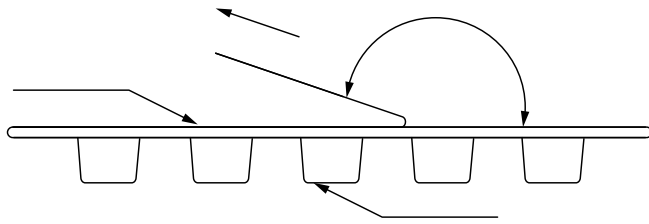


c  
c  
c

:

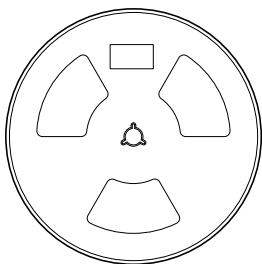
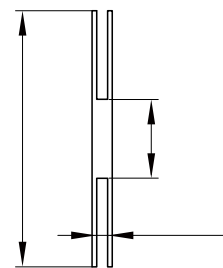
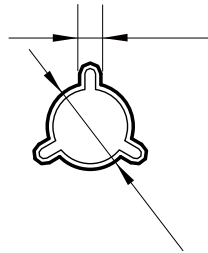
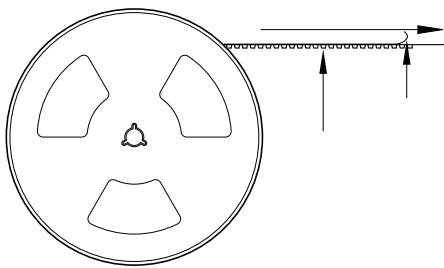


BCMA4532	$3.6 \pm 0.1$	$4.9 \pm 0.1$	$1.5 \pm 0.1$	$4.0 \pm 0.1$	$8.0 \pm 0.1$	$12.0 \pm 0.3$	$3.0 \pm 0.1$	$1.75 \pm 0.1$	$0.26 \pm 0.05$
----------	---------------	---------------	---------------	---------------	---------------	----------------	---------------	----------------	-----------------

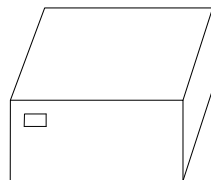


The peel force of top cover tape shall be between 0.15 to 0.78 N

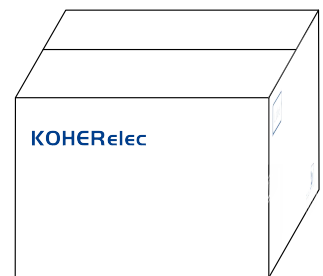
:



500 Pcs/Reel



4 Reel /Inner box( 2K Pcs)



8 Inner box/Carton box(16K Pcs)

:

•

•

•

•

•

•

•

•

•

•

•

•

•